



[Home](#) | [Purchase](#) | [Samples](#) | [Download](#) | [FAQ](#)
[Testimonials](#) | [About us](#) | [Flash tutorials](#)

How to insert SWF files into Pow

Mix-FX & Power Point: "How to" tutorial

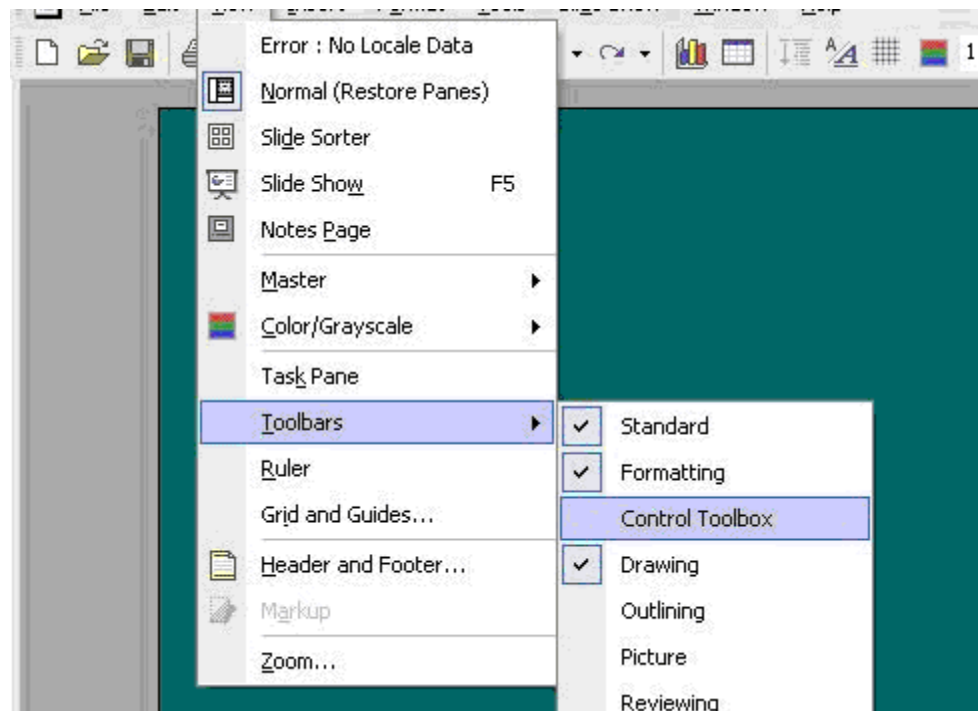
Importing Flash files created with Mix-FX into PowerPoint is a snap. By following these simple steps you will be up and running in no time at all and impressing all of your visitors with your talents:

Step 1:

1. Open up your PowerPoint presentation. Select the slide into which you want to insert the animation.
2. Go to View - Toolbars - Control Toolbox (figure 1), click on the icon which looks like a little hammer.
3. Select "Shockwave Flash Object" (figure 2) from the toolbox.
4. Drag a square onto the place where you want the file to appear.
5. After you have done this, right-click on the box, click on properties, and the properties menu will pop up.
6. To add the Mix-FX file you must click on "Custom Properties", select the "Build" icon (the three dots at the end of the list).
7. Now enter the Movie URL (make sure that you enter the correct path!) and tick the "Embed Movie" box as well.
8. Finally, save and run your slide show in presentation mode.

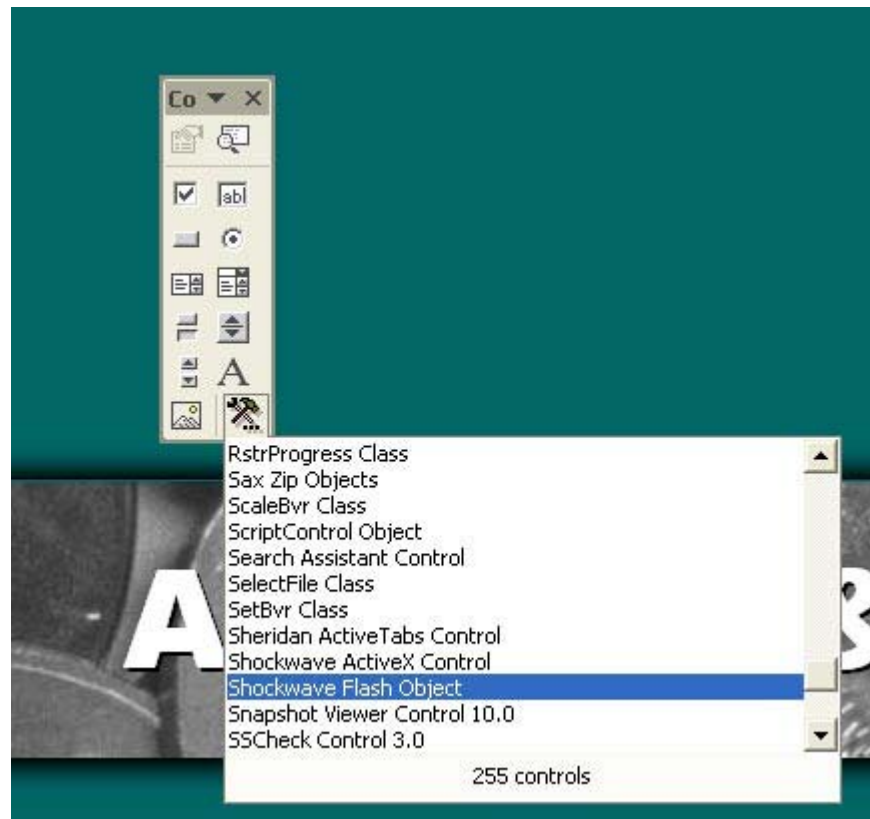
Figure 1





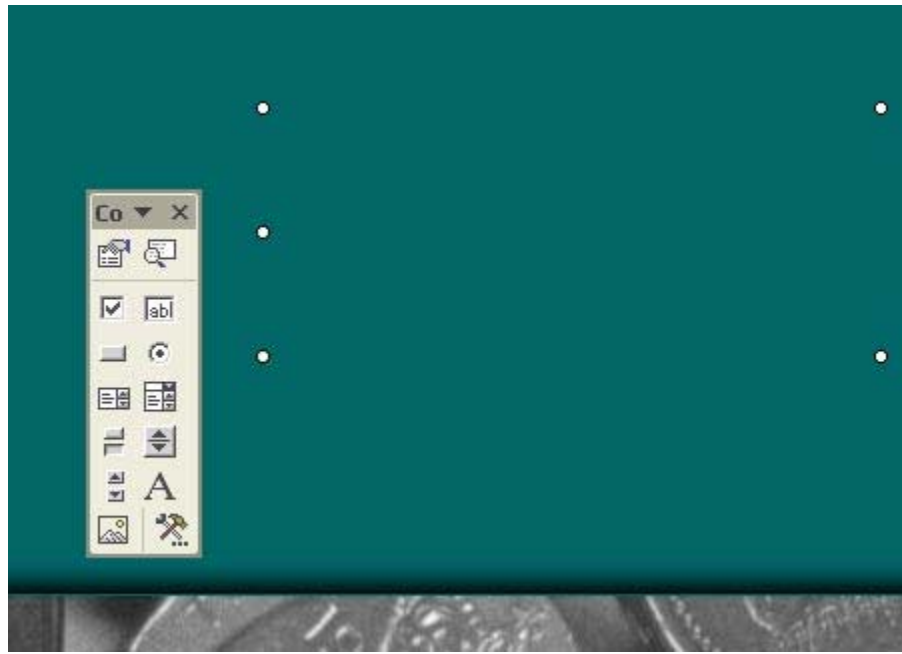
After you have opened the Control Toolbox you will see an option box on your screen which looks like the one in Figure 2

Figure 2



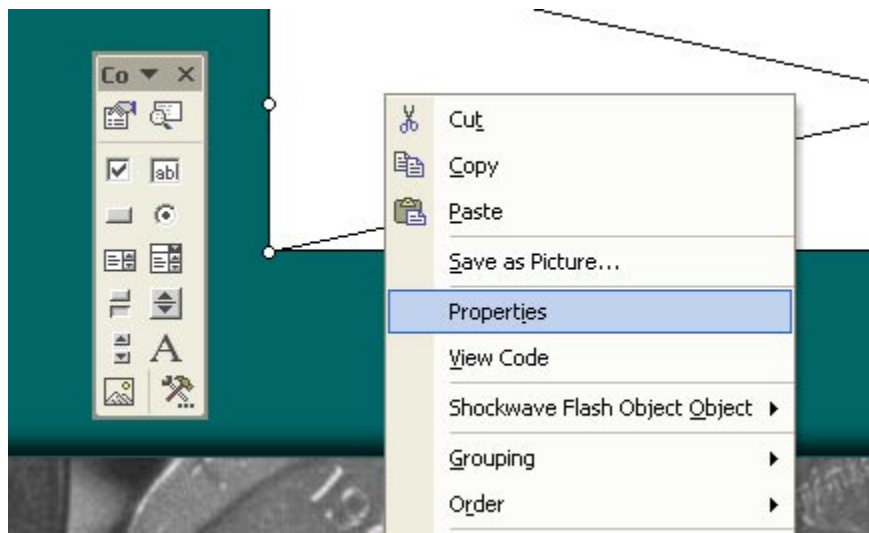
After you have drawn your animation box you will have something similar to figure 3, a transparent box with white dots representing the 4 corners as well as the bottom of the animation. At this point, if the size is right, you can resize the animation.

Figure 3



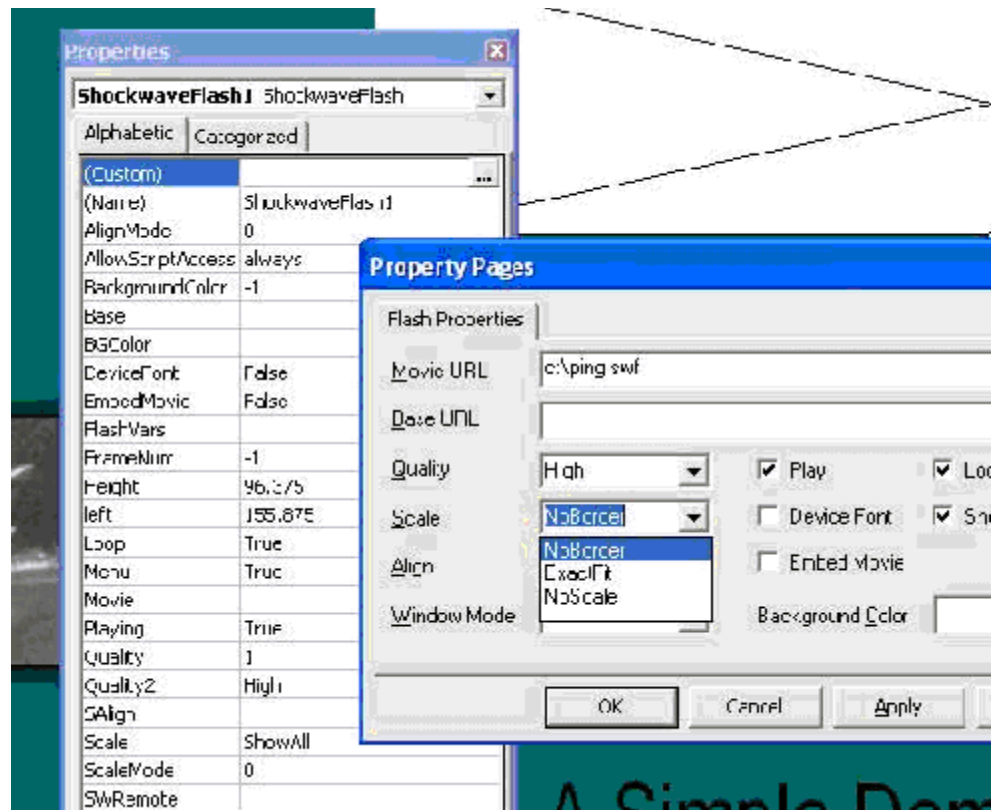
You now need to edit the properties of your Flash animation. You will see a white box with an X through your screen, this is your animation. Right click on the animation and then select Properties from the menu (Figure 4)

Figure 4



A Properties box will now appear on your screen. Do click on the (CUSTOM) setting at the top of the menu figure 5.

Figure 5



A properties page will now appear, this is where you enter the information about your Flash movie. In the example we have chosen PING as our animation and located in the root of drive c:, so in the Movie URL we entered C:\ping.swf. We also need to make one other adjustment to our movie in order for it to appear properly in the Scale section, click on the little down arrow and choose **NoBorder**, which will allow your movie to fit properly in the display box.

Once that is done, click OK, and then view your presentation. Also be sure to check the Embed Movie as well otherwise the movie will not display correctly the presentation is moved to another location.

There you have it, a nice simple way to add a little pizzazz to your presentation!

We are committed to develop the
best productivity tools available
at a very reasonable price.



[Home](#) | [About us](#) | [Purchase](#) | [Samples](#) | [Download](#)
[Testimonials](#) | [Partners](#) | [Link to us](#) | [Affiliates](#) |
[Releases](#) | [Flash Tutorials](#) | [Sitemap](#) | [Flash but](#)
[Samples](#) | [Flash animations Samples](#) | [Web Design t](#)
[File Format](#) | [Flash Facts](#) | [Web Design checklist](#) |
[Flash software Tools](#) | [Flash logos design](#) | [Basic S](#)

If you have any questions, please contact [Support](#)
[FX.com](#)

Copyright © 1999-2004
[Triple W Flash Tools](#)

[Privacy statement](#) | [Copyright notice](#)